

## Overview

Rehabilitative Resources, Inc. was incorporated in 1975 with the mission to provide quality, community based services for people with disabilities.

- 180+ individuals receiving community based services through DMR contracts
- 190+ individuals transported daily
- 48 residential program locations
- 73 agency owned vehicles, wheelchair vans
- RRI service area is the state of Massachusetts and currently includes five counties in 44 towns
- RRI employs over 470 staff members

## Future Goals

- To further expand trainings, education and conferences.
- To design additional accessible housing.
- To promote long term transportation services.
- To maintain a highly competitive workforce.
- To form partnerships in terms of community support for RRI and for fundraising activities.
- Further expand Day Habilitation Program services.
- To establish RRI as an autism resource center by offering a lending library & autism seminars for the local community.

## Accomplishments

- RRI Community Day Program received a three year accreditation from The Commission on Accreditation of Rehabilitation Facilities (CARF).
- Two-year license and certification received from the Department of Mental Retardation. (DMR)
- New Residential Programs: Hope Street, Fitchburg, South Main Street, Mansfield, and Fiske Hill, Sturbridge
- Established creative summit to research unique and creative ventures to increase revenue for the RRI Day Program.
- All annual fundraising events: Raffle, Wine Tasting, Golf Classic and Road Race had increased participation and revenue from previous years.

*“Success means doing the best we can with what we have. Success is the doing, not the getting; in the trying, not the triumph. Success is a personal standard, reaching for the highest that is in us, becoming all that we can be.”*

*- Zig Ziglar*

## Senior Leadership:

**Bonita J. Keefe-Layden, CEO**

Julie Carita, *Day Program Manager*

Dorothy Cote, *CFO*

Bruce Leger, *Director of Quality Assurance*

Kerrie Mason, *Marketing & PR*

Richard Rogers, *Transportation Director*

Paige Slein, *Director of Training & Education*

Deborah Trainor, *Senior Human Resource Administrator*

Melissa White, *Assistant Director of Residential Operations*

Melissa Wilson, *Director of Residential Operations*

**Thank you to all of the people that have donated to RRI throughout the year. Your support is greatly appreciated.**

## Board of Directors:

**Lori A. Richardson, President**

Gordon Bertrand

Shawn Dinerman

Carl Ekman

Janet Garon

Patricia Lamoureux

Patricia Nylin, *Clerk*

Donna Peters, *Vice President*

Dick Whitney, *Past President*

Mary Wilson



Rehabilitative Resources, Inc.  
1 Picker Road, P.O. Box 38  
Sturbridge, MA 01566  
[www.rehabresourcesinc.org](http://www.rehabresourcesinc.org)

# Reaching New Heights

## Rehabilitative Resources, Inc. FY 2007 Annual Report



*“For what is the best choice, for each individual is the highest it is possible for him to achieve.”*

*- Aristotle*

Providing Quality, Community Based Services to People  
with Developmental Disabilities for Over 30 Years

**Message from the President**

***'Reaching New Heights'***

Since 1975 Rehabilitative Resources, Inc. has been reaching new heights in achieving our mission of providing quality community based services for people with disabilities. Reaching new heights is accomplished by having a vision for the future, the energy and resources to get there, and a solid foundation to launch from.

This past year, Armand L. Carpentier retired from the board of directors after 32 years of dedicated service. The tireless passion and commitment he brought to this agency remains a fundamental part our foundation.

Our primary funding resource continues to be the Commonwealth of Massachusetts. The services we provide are a leading cost-effective benchmark in the industry. Our agency is under funded. There have not been fair rate setting processes or cost of living adjustments for our staff in decades. Despite this, our mission is achieved by the consistent energy and determination of our over 470 employees on a 24 hour 7 day a week basis.

Our staff holds "creative summits" whereby ideas soar to reality. The idea of a state of the art day habilitation program has soared to the reality of receiving CARF national accreditation this past year. The idea of being an autism center to support families in our communities living with autism has taken flight. Every service we deliver is looked at with the goal of reaching new heights.

Our agency envisions a future where there are no longer institutions for people with disabilities. We look to a future where all people with disabilities are valued and an integral part of their community. We seek a future where the dignity of the whole person soars.

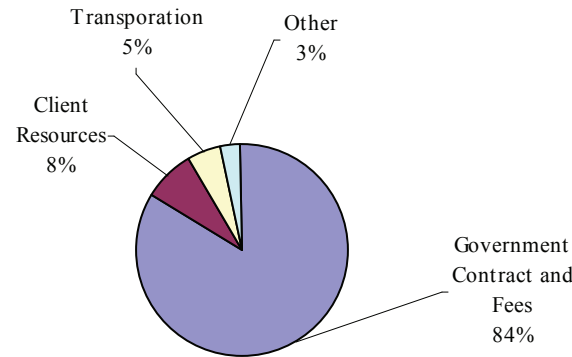
*Lori A. Richardson*

Lori A. Richardson  
President, RRI Board of Directors

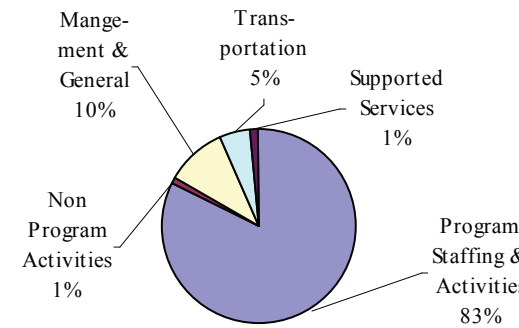
**STATEMENT OF FINANCIAL POSITION JUNE 30 2007 AND 2006**

<b>ASSETS</b>	<b>2007</b>	<b>2006</b>	<b>LIABILITIES &amp; NET ASSETS</b>	<b>2007</b>	<b>2006</b>
Current Assets			Current Liabilities		
Cash	\$ 510,569	\$ 184,090	Note Payable, Bank	\$ -	\$ 160,000
Accounts Receivable	405,181	619,370	Current Maturities of Long-Term Debt	258,344	233,113
Prepaid Expenses	195,608	94,716	Current Portion of Capital Lease Obligations	6,557	6,557
Total Current Assets	1,111,358	898,176	Accounts Payable, Trade	245,629	242,374
Property, Plant & Equipment Net	10,043,378	9,877,435	Accrued and Other Liabilities	771,529	658,761
Other Assets			Total Current Liabilities	1,282,059	1,300,805
Security Deposits	2,437	2,437	Long-Term Debt, Less Current Maturities	6,261,520	6,173,783
Land Held for Resale	46,347	46,347	Long-Term Capital Lease Obligations	195,377	201,935
Bond Issuance Costs, Net of Amortization	40,808	43,162	Deferred Compensation	49,940	19,434
Cash Value of Life Insurance	61,069	36,735		6,506,837	6,395,152
	<u>\$11,305,397</u>	<u>\$10,904,292</u>	Net Assets—Unrestricted	3,516,501	3,208,335
				<u>\$11,305,397</u>	<u>\$10,904,292</u>

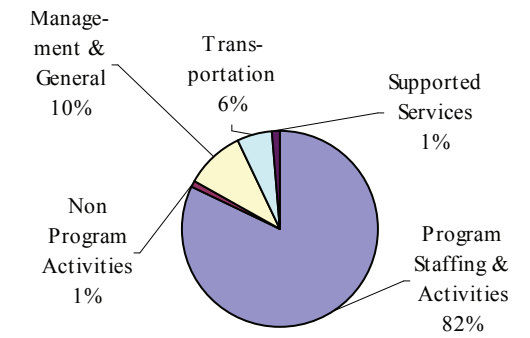
**Funding Sources  
FY 2007 Revenue \$ 17.4 Million**



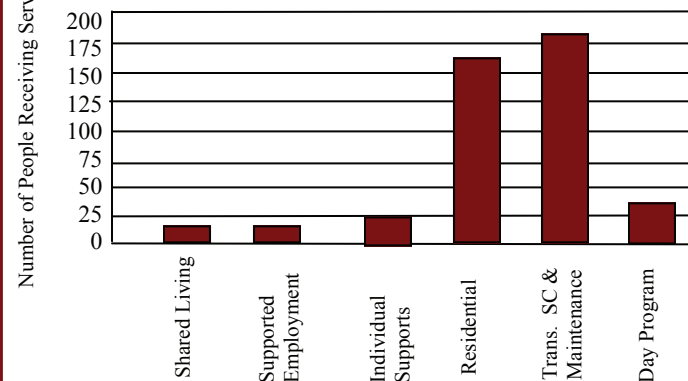
**2007 Expenditures**



**2006 Expenditures**



**Support Service Contracted 7/1/06 to 6/30/07**



**Non-State Funded Revenue Sources 7/1/06 to 6/30/07**

**Budget FY 2008**

**\$20 Million**

**Major Funding Source:**

**DMR  
Mass Health  
MART**

